

R-EFS-0202-90-GO-120

4-Port Outdoor Gigabit Switch PoE++



Accessories

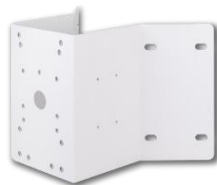
R-PMA



R-RPMA



R-CMA



Technical Specification

Networking Specifications

Total Gigabit Ports	4
Gigabit PoE Port (10M/100M/1G)	2x90W bt PoE
30W IEEE802.3 at Power over Ethernet	support
90W IEEE802.3 bt Power over Ethernet	support
Gigabit SFP Slots	2
Forwarding Capacity	11.904Mpps
Mac Table	8k
Jumbo Frames	9,216 Bytes
Switching Capacity	8 Gbps

Power Specifications

Input Voltage	100VAC ~ 240VAC 280VAC 4Hr 300VAC 1min.
Backup Power Input Voltage	48VDC ~ 56VDC
Output Voltage Range / port 1~port 2	54 VDC PoE IEEE 802.3af (Max. 15.4W) output PoE+ IEEE802.3at (Max. 30W) output bt PoE (Max.60W/90W) output
PSE Power Pin Assignment	12(-),36(+),45(+),78(-)
Switch power consumption (without PoE)	5W
Power Budget	120W
Surge Protection / each PoE Port	6KV
Surge Protection for AC power	10KV

Mechanical Specifications

Dimensions (L x W x H)	255.2 x 199.9 x 90 mm
Weight	3.2 kg
Connectors	PF 3/4" conduit cable gland x1pc M25 cable gland with 5x 5mm holes x1pc

Environmental Specifications

Weather Rating	IP67
Vandal Proof	IK10
Operating Temperature	-40°C ~ 65°C
Storage Temperature	-40°C ~ 85°C
Operating Humidity	5% ~ 95% non-condensing

Certifications

EMC	CE, FCC, VCCI, C-Tick Class A
Safety	EN60950-1, IEC60950-1
Surge	EN61000-4-5